

## WSTA BONDED RUSTIC TERRAZZO

### PART 1 – GENERAL

#### 1.01 SUMMARY

Bonded terrazzo minimum of 1-3/4 inches thick (1/2 inch nominal terrazzo topping thickness over 1-1/4 inch nominal underbed.)

##### A. Work included in this Section

1. Portland Cement terrazzo, bonded Rustic type, horizontal.
2. Underbed, Portland Cement base.

##### B. Related work in other Sections

1. Furnish and installation of concrete slab slope to drain at a minimum 1/8"/lf.
2. Furnish and setting of floor drains.
3. Joint sealants installed with terrazzo.
4. Sufficient water, temporary heat and light, and adequate electric power connected with outlets within 100 feet of work area.

#### 1.02 QUALITY ASSURANCE

##### A. Acceptable suppliers

1. Suppliers shall be Associate members of the Western States Terrazzo Association (WSTA) and the National Terrazzo & Mosaic Association (NTMA) and shall supply materials in accordance with the standards and specifications of the WSTA and NTMA.
2. Marble chips and/or glass aggregates shall be standard colors and gradated sizes as supplied by Associate WSTA member suppliers.

##### B. Acceptable installers

Terrazzo installation contractor shall be current Contractor members of the WSTA/NTMA and shall perform all work in accordance with NTMA specifications and standards. (See <http://westernstaterazzo.com/contactus.htm> for information on regional Contractor Members)

#### 1.03 SUBMITTALS

##### A. Product Data

Submit product data for all related materials including divider strips, expansion strips, membranes, sealers and cleaners.

##### B. Samples

1. Submit (3) 6" square samples for each color and type of terrazzo specified or selected.

2. Submit (3) 6" lengths of each divider of expansion strip required.

##### C. Certification

Submit certification letter from WSTA that terrazzo installation contractor is current member in good standing of the WSTA and the NTMA.

##### D. Maintenance

Submit NTMA Owners Guide For Recommended Maintenance For New Terrazzo Floors.

#### 1.04 DELIVERY, STORAGE AND HANDLING

##### A. Delivery of materials

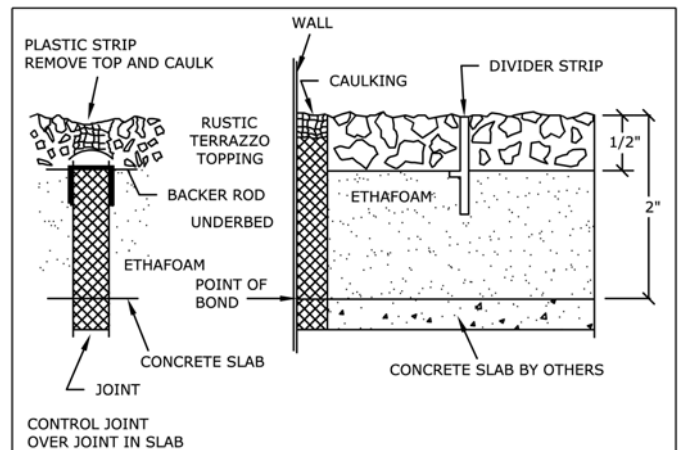
Deliver materials in a manner to prevent damage or contamination to containers or bags of materials.

##### B. Storage of materials

Store materials in a clean, dry location, heated to minimum 50 degrees, furnished by others.

#### 1.05 GUARANTEE/WARRANTY

Terrazzo materials and installation shall be guaranteed for a period of (1) year from date of substantial completion. Guarantee shall be limited to the repair and/or replacement of materials or workmanship found to be defective per NTMA standards and specifications.



## WSTA BONDED RUSTIC TERRAZZO

### **PART 2 – PRODUCTS**

#### **2.01 MATERIALS**

- A. Portland Cement: ASTM C150.
- B. Sand: Clean, washed, locally available sand.
- C. Marble Chips; Standard color marble or granite chips as distributed by WSTA Associate member suppliers. Size per NTMA gradation standards, with a maximum of 10% glass (size #0 or #1) aggregate per NTMA guidelines.
- D. Divider Strips: Zinc, Aluminum, or Brass, in thickness as specified on drawings as supplied by Manhattan American, TESCO Products, and/or authorized distributors.
- E. Colorants: Alkali resistant color stable pigments per NTMA Design Guide Standards.
- F. Acid: Muratic Acid solution 10% neutralized with water upon completion of terrazzo washing.
- G. Terrazzo Cleaner: PH Factor between 7 and 10, biodegradable and phosphate free.
- H. Sealer: TESCO penetrating sealer.

#### **2.02 MIXES**

##### **A. Terrazzo Selection:**

- 1. Terrazzo type shall be Bonded Rustic Terrazzo per sample.
- 2. Color shall be WSTA or NTMA color plate or custom matrix as produced by WSTA Contractor member – Sample(s) Designation # \_\_\_\_\_.

##### **B. Proportion:**

- 1. Underbed: One part Portland Cement to four parts sand and sufficient water to provide workability at as low a slump as possible.
- 2. Terrazzo Topping: One 94 pound bag of Portland cement per 200-200 pounds of marble chips, color pigment if required and sufficient potable water to produce a workable mix.

##### **C. Mixing:**

- 1. Underbed: Charge and mix sand and Portland Cement, add water and mix.
- 2. Terrazzo Topping: Charge and mix marble chips, Portland cement and color pigment if required. Add water and mix to a uniform workable consistency.

### **PART 3 – EXECUTION**

#### **3.01 INSPECTION**

Examine areas to receive terrazzo for:

- 1. Defects in existing work that affect proper execution of terrazzo work. Notify contractor of any defects in concrete or other related work for correction.
- 2. Start only when all defects have been corrected by others.

#### **3.02 INSTALLATION**

##### **A. Underbed:**

- 1. Thoroughly saturate concrete subfloor with water, slush and broom with neat cement paste.
- 2. Place underbed mix.
- 3. Screed underbed to elevation ½” below finished floor elevation.
- 4. Install divider strips per approved layout in semi-plastic underbed and trowel along edges.
- 5. Install control joint strips if required, taking care that control joint is full depth of underbed.

##### **A. Placing Terrazzo:**

- 1. Saturate underbed with water.
- 2. Place terrazzo mixture in panels formed by divider strips and trowel mixture to top of strips.
- 3. Seeding of additional chips is optional.
- 4. Roll and compact surface until all excess cement and water have been extracted.

##### **B. Finishing:**

Expose aggregate by hosing, absorbent rolling, or use of a retarder.

##### **C. Curing:**

Flood with clean water, or cover with 4 mil polyethylene sheeting.

##### **D. Cleaning:**

When topping is sufficiently cured, in the opinion of the terrazzo contractor, apply a 1 to 10 solution of muriatic acid in water, scrub with a stiff broom to remove all laitance, and rinse immediately with clean water to remove all traces of the acid.

##### **E. Protection:**

Upon completion, the work shall be ready for final inspection and acceptance by owner or agent. The General Contractor shall protect the finished floor upon completion

**END**